

# It's good to be back!

Welcome to the second edition of the Grey Mare Lane newsletter. With the pandemic stopping us from sharing this in April as planned, we're happy to be finally able to update you on the regeneration project.

We've spent lockdown investigating how we can continue to consult with you whilst protecting our customers and our colleagues, which has proven difficult. However, plans are now starting to form for COVID secure workshops, online consultations and one-to-one phone calls. The image on the next page shows a timeline on how our engagement plans currently look.

We know that this has been a very challenging time for everyone, and we want to thank you for your patience and understanding while we've been on pause.

One of the things we're most excited to consult with you on is energy efficiency. Climate change is one of the biggest challenges to our planet. Being a housing provider is more than providing high quality, affordable housing, it's about providing safe, energy efficient homes and supporting you to reduce your fuel bills and avoid fuel poverty.

As part of our regeneration plans, we'll be undertaking retrofit works to the existing homes on the estate, consulting with residents on the options, including external works and improvements to heating systems. Alongside providing high quality, affordable homes, our aim is to reduce energy bills, improve health and wellbeing, and support Manchester to meet its carbon targets.

## Do you need employment support?

One Manchester prides itself on being more than just a landlord.

We offer a free service to support those looking to get into work, providing advice and a wide range of training, work placements, self-employment support, and volunteering opportunities. We are also able to support with money advice and our Working Wardrobe is available for men who need interview clothes.

Whatever your experience, background, or ambitions, One Manchester's award winning One Future service can help you take the next step on the pathway to a more successful future.

Last year we helped 308 people into work, 426 people accessed training via us, and 79 people completed a work placement. We are able to support all age groups and have additional services to help young people get that dream career, with a wraparound service to guide them into the world of work.

We are more than employment specialists; we care that you get the individually tailored support you need to achieve your ambitions and goals. Contact us on **0161 230 1057** or email **onefuture@onemanchester.co.uk**

If you need to report any repairs, if there is anything else you wish to speak to us about, or if you require translation services, please contact us:



[www.greymarelaneestate.co.uk](http://www.greymarelaneestate.co.uk)

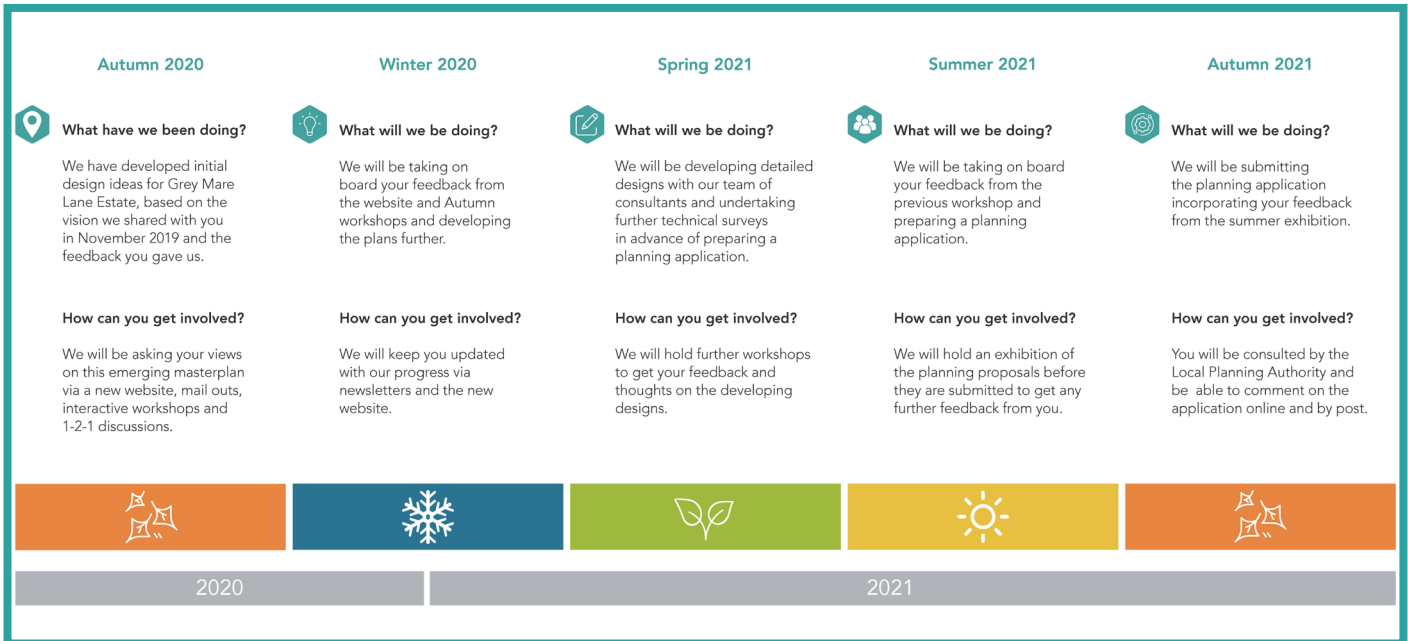


0330 355 1000



## Proposed engagement plan

How can you get involved with the design of the future Grey Mare Lane Estate?




## Do you know when this photo was taken?

We want this newsletter to have a regular community focus, and for this edition, we want you to work out when this picture of Grey Mare Lane was taken!

Use any of these contact methods to send us your answer by **31 October 2020**:

 @onemcr

 community.development@onemanchester.co.uk


 Grey Mare Lane Photo Competition,  
One Manchester, Lovell House,  
Archway 6, Hulme, M15 5RN



If you have the correct answer you could win a £25 voucher!

If you have any old photos of Grey Mare Lane, we'd love to share them in a future newsletter. You can send them to us on Twitter, by email or by post using the addresses above. Good luck!

Win a  
£25  
voucher!

 If you need to report any repairs, if there is anything else you wish to speak to us about, or if you require translation services, please contact us:

 [www.greymarelaneestate.co.uk](http://www.greymarelaneestate.co.uk)

 0330 355 1000